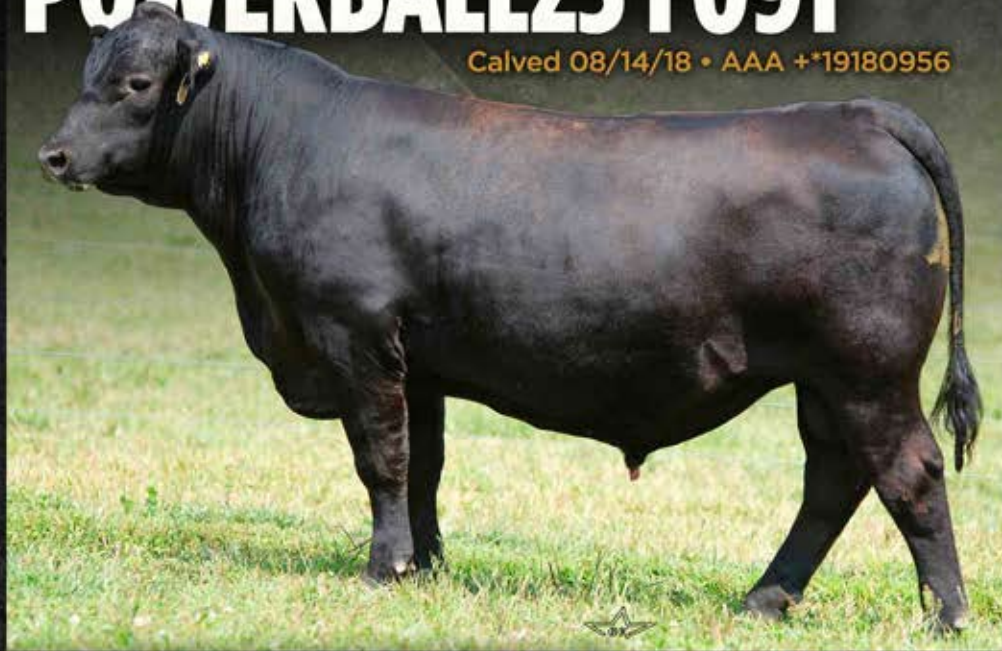


CALVING EASE • GROWTH • MARBLING

Roseda

# POWERBALL23 F091

Calved 08/14/18 • AAA +\*19180956



**+70 \$M, TOP 15%**

**+106 \$W, TOP 1%**

**+99 \$G, TOP 1%**

**+216 \$B, TOP 1%**

**+350 \$C, TOP 1%**

+\*Quaker Hill Manning 4EX9

\*EWA PEYTON 642

+\*EWA 444 of 968 Progress

\*VAR Discovery 2240

\*ROSEDA BLACKCAP B103 D118

+\*Roseda Blackcap 0134 B103

**\$40/UNIT • \$50/CERT**

CED	BW	WW	YW	MILK	MARB	REA	CW	\$F
14	0.2	104	180	26	1.67	0.70	78	116
4%	30%	1%	1%	45%	1%	25%	1%	4%

- Outlier for Easy Calving, High Growth, High Marbling Genetics
  - Top 1% WW, YW, CW, Marb, \$W, \$G, \$B and \$C
  - Top 2% RADG (Feed Efficiency)
  - Top 4% CED (Calving Ease Direct)
- Actual BW - 75 lb., Adj. WW 705 (ET), Adj. YW 1371, SC 37 cm



## ROSEDA K263 PROPHET G305

Calved 8/29/19 • AAA +\*19558393

S: G A R Prophet K263 • MGS: V A R Discovery 2240

CED	BW	WW	YW	MILK	MARB	REA	\$M	\$B	\$C
15	-0.5	93	167	45	1.71	1.03	76	218	259
2%	15%	1%	1%	1%	1%	4%	10%	1%	1%

**\$30/UNIT • \$40/CERT**

VOLUME DISCOUNTS AND FREE SHIPPING AVAILABLE!

*Bulls & Females  
available private treaty!*



**CONTACT US TODAY!**

ED AND ROSEMARY BURCHELL, OWNERS

DEAN BRYANT: 410-274-7134

15317 CARROLL ROAD • MONKTON, MARYLAND 21111

OFFICE: 410-472-2697

[WWW.ROSEDA.COM](http://WWW.ROSEDA.COM)

